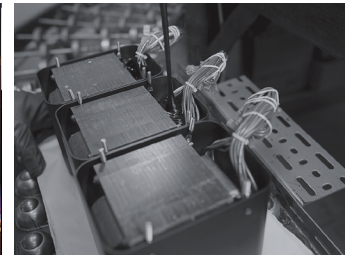


# MC205 power amplifier

- The MC205 delivers all the explosive dynamics that high-performance home theater systems require by delivering 200 watts of power to each of the 5 individual channels commonly used in home theaters.
- Massively over built amplifier design does not require cooling fans so the most subtle film soundtracks are not masked by common amplifier fan noise.
- Precision McIntosh power watt meters allow monitoring of the primary front sound stage while clever engineering matches the output of MC205 with all speaker types.
- Features many notable McIntosh technologies including Power Guard® to prevent harsh sounding clipping that could damage your speakers as well as Sentry Monitor™ that shuts down the unit if current exceeds safe operating level.
- May be combined with a stereo amplifier to complete a five channel home theater plus two channel remote zone.



## Five Channel Home Theater Power House

**McIntosh®**

LEGENDARY PERFORMANCE™

[www.mcintoshlabs.com](http://www.mcintoshlabs.com)

# MC205 power amplifier

## Power Output:

Minimum sine wave continuous average power output per channel, all channels operating is: 200 Watts into a 4 Ohm or 8 Ohm load.

## Output Load Impedance:

8 and 4 Ohms

## Rated Power Band:

20Hz to 20kHz

## Total Harmonic Distortion:

0.005% maximum harmonic distortion at any power level from 250 milliwatts to rated power, 20Hz to 20kHz.

## Overall Dimensions (W x H x D):

17-1/2" (44.45cm) x 9-7/16" (23.97cm) including feet x 21" (53.3cm) including the front panel and cables

## Weight:

81 lbs. (44.2kg) net  
114 lbs. (51.8kg) in shipping carton

## Exclusive McIntosh Power Assurance System:

A collection of technologies that enhance performance and reliability while protecting the amplifier and loudspeakers.

## Power Guard®:

A waveform comparison circuit continuously monitors both input and output signals. Power Guard dynamically adjusts the input level to avoid clipping while preventing harsh sounding distortion.

## Sentry Monitor:

Fuse-less short-circuit protection circuit disengages the output stage before current exceeds safe operating level-resets automatically.



## Dynamic Power Manager® (DPM):

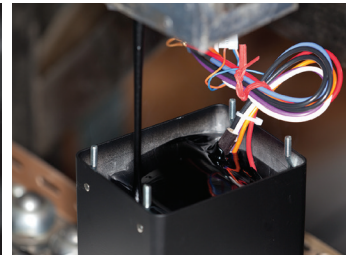
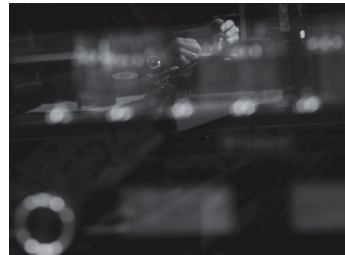
By matching the characteristics of the output stage to 4 or 8 Ohm loudspeakers, DPM insures the most efficient power transfer, reduces distortion, and promotes cool operation; with DPM you get all the power you paid for.

## Wattmeter:

Swift, accurate response reveals program peaks so staying within the power limits of your loudspeakers is easy.

## For the Consumer's Protection:

In order to ensure the highest level of customer satisfaction, new McIntosh products may only be purchased from an Authorized McIntosh Dealer; and, with certain limited exceptions may only be purchased over-the-counter or delivered and installed by the Authorized McIntosh Dealer. McIntosh does not warrant, in any way, products that are purchased from anyone who is not an Authorized McIntosh Dealer, or that have had their serial numbers altered or defaced.



## Companion Products

The McIntosh MX160 A/V Processor, MVP901 Audio Video Player, MR88 AM/FM/HD Tuner, MPC1500 Power Controller, XR100 Loudspeaker, LCR80 Center Channel Loudspeaker, XR50 Bookshelf Loudspeaker and the CS100 Ceiling Loudspeaker are logical companions for the MC205 Power Amplifier. Your authorized dealer can provide additional information.

To learn more, please call us at 1.800.538.6576.

# McIntosh®

LEGENDARY PERFORMANCE™

www.mcintoshlabs.com